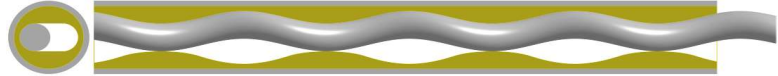




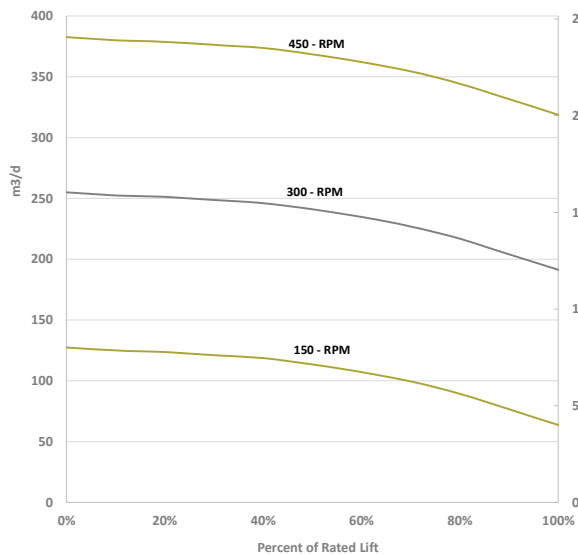
PUMP SPECIFICATION

085M - STD - FLOT - SHOT

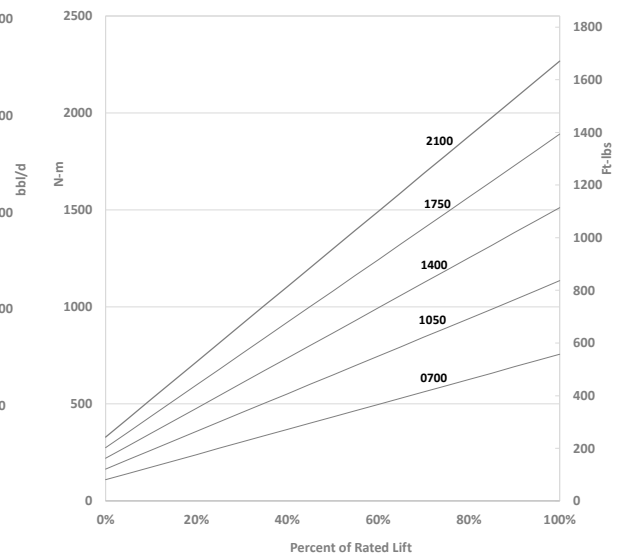


85 m3 / Day / 100 RPM (535 bbl / Day / 100 RPM)						
Available Models		085 M 0700	085 M 1050	085 M 1400	085 M 1750	085 M 2100
Geometry: Single Lobe		Operating Speed: 50 - 500 RPM		Free Gas Volume Fraction: 40% continuous		
Swept Rotor Angle:	61	Orbit Helix - mm (in): 74.00 (2.913)		Intake cavity area - mm ² (in ²): 1365 (2.12)		
Pump Lift H ₂ O - m (ft)		700 (2296)	1050 (3444)	1400 (4592)	1750 (5740)	2100 (6888)
Rated Pressure kPa (psi)		7000 (1015)	10500 (1523)	14000 (2030)	17500 (2538)	21000 (3046)
Rated Torque N-m (ft-lbs)		756 (557)	1135 (836)	1512 (1114)	1891 (1393)	2267 (1671)
ROTOR	Rotor Top Connection mm (in)	1" API Pin				
	Rotor Head Diameter mm (in)	50.80 (2.00)				
	Overall Rotor Length m (in)	5.06 (199)	7.33 (289)	9.61 (378)	11.88 (468)	14.16 (557)
	Weight kg (lbs)	47 (103)	71 (156)	94 (207)	118 (260)	141 (310)
STATOR - STD	Nominal Rotor Drift OD mm (in)	57.25 (2.254)				
	Stator OD mm (in)	103.0 (4.055)				
	Collar OD (mm)	120.65 (4.75)				
	Connection Discharge - Intake	4" NUE Pin - 4" NUE Pin				
	Stator Overall Length w TB m (in)	5.01 (197)	7.28 (287)	9.56 (376)	11.83 (466)	14.11 (555)
	Weight kg (lbs)	106 (233)	159 (350)	212 (466)	265 (583)	318 (700)
STATOR - FLOT - SHOT	Distance TB to Elastomer mm (in)	300 (12)				
	Tagbar/sub bottom connection	3 1/2" EUE Pin				
	Stator OD mm (in)	FLOT - 106 (4.173) // SHOT 99 (3.898)				
	Collar OD mm (in)	FLOT - 106 (4.173) // SHOT 99 (3.898)				
	Connection Discharge - Intake	FLOT - 3 1/2" EUE Box // SHOT - 2 7/8" EUE Box				
	Stator Overall Length w TB m (in)	6.23 (245)	8.51 (335)	10.78 (424)	13.05 (514)	15.33 (603)
NOTE	Weight kg (lbs)	138 (304)	191 (420)	244 (537)	297 (653)	350 (770)
	Distance TB to Elastomer mm (in)	300 (12)				
	Tagbar/sub bottom connection	FLOT - 3 1/2" EUE Pin // SHOT - 2 7/8" EUE Pin				
Length and weight values for FLOT - SHOT reflect a 1220 mm (48 in) orbit tube. Add 610 mm (24 in) and 10 kg (22 lbs) for extended orbit tubes.						

Target in Well Flow Rates m³/d (bbl/d)



Target in Well Torque N-m (ft-lbs)



'CAUSE WE GIVE A S#!T